

# ASSEMBLY KIT A3 SYSTEM



Certified by TÜV Rheinland according to EN 81-1/2:1998+A3:2009

## Overspeed Governor mod. **EUROPA**

- Centrifugal activation.
- $P_s \leq 2,5 \text{ m/s}$   $T_s \leq 3,0 \text{ m/s}$ .
- $\varnothing 200$  or  $\varnothing 300$ .
- Options:
  - Remote tripping.
  - Contact with remote reset.
  - A3 Incorporated.



+



Electronic module **UCM100**  
(Compatible with all controllers)

+



Safety Gear

- M245
- M247
- M290

## DRIVING SET



## TENSION PULLEY

OPTION A: Guide Fixation



OPTION B: Floor Fixation  
(only  $\varnothing 200$ )



# ASSEMBLY KIT A3 SYSTEM



Certified by TÜV Rheinland according to EN 81-1/2:1998+A3:2009

## Overspeed Governor mod. **Aljo 2129/2130**

-Trigger activation.

-Model Aljo 2129 Ø 200.

-Rs ≤ 1,00 - Ts = 0,5 ÷ 1,60 m/s.

-Model Aljo 2130 Ø 300.

-Rs ≤ 1,60 - Ts = 0,67 ÷ 2,16 m/s.

-Options:

-Remote tripping.

-Contact with remote reset.

-A3 Incorporated



+



+



Electronic module **UCM100**  
(Compatible with all controllers)

Safety Gear

-M245  
-M247  
-M290

## DRIVING SET

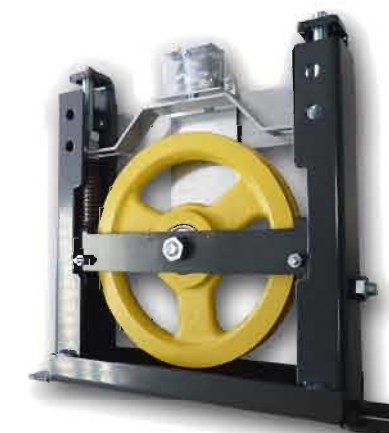


## TENSION PULLEY

OPTION A: Guide Fixation



OPTION B: Floor Fixation  
(only Ø 200)



# ASSEMBLY KIT A3 SYSTEM



Certified by TÜV Rheinland according to EN 81-1/2:1998+A3:2009

## Overspeed Governor mod. **GOLIATH**

- Centrifugal activation.
- $R_s \leq 1,35 - T_s = 0,40 \div 1,60m/s.$
- Ø 200.
- Options:
  - Remote tripping.
  - Contact with remote reset.
- A3 Incorporated.
- Reduced size.



+



+



Electronic module **UCM100**  
(Compatible with all controllers)

Safety Gear

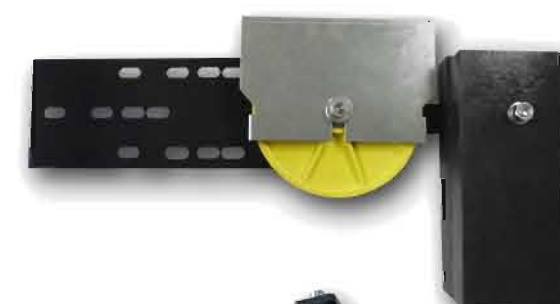
- M245
- M247
- M290

## DRIVING SET



## TENSION PULLEY

OPTION A: Guide Fixation



OPTION B: Floor Fixation





# ASSEMBLY KIT A3 SYSTEM



Certified by TÜV Rheinland according to EN 81-1/2:1998+A3:2009



Overspeed Governor  
mod. **ZEUS**

- Centrifugal activation.
- $R_s \leq 1,35$  -  $T_s = 0,40 \div 1,60$ m/s.
- $\varnothing 200$ .
- A3 Incorporated.
- Situated on Car.

+



Electronic module UCM100  
(Compatible with all controllers)

+



Safety Gear

- M245
- M247
- M290

## DRIVING SET



## TENSION PULLEY

-Floor/Ceiling Fixation



# SAFETY MODULES FOR A3 SYSTEM



Certified by TÜV Rheinland according to EN 81-1/2:1998+A3:2009



UCM 200 safety module for the control of the brake contacts, for example in Gearless machines, in systems of protection against unintended car movement (UCM, Unintended Car Movement) in fulfillment of Annex 3 of regulation EN 81-1:2001 +A3 (point 9.11).

Electronic module **UCM200**

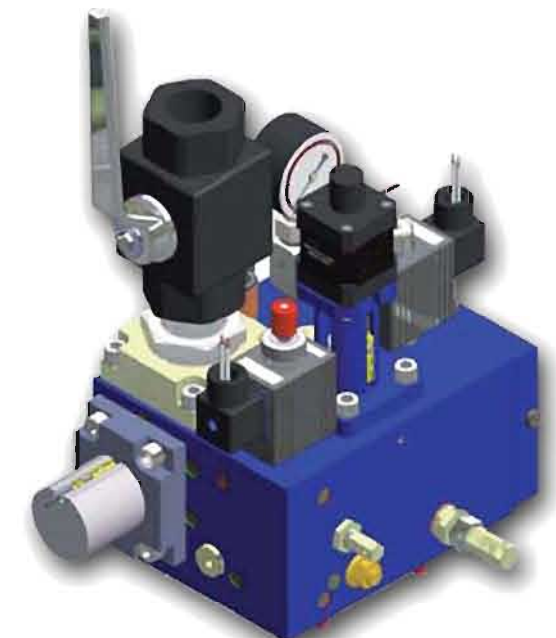


Gearless Machine



UCM 300 safety module for the control of GMV® hydraulic plants with NGV valve for systems of protection against unintended car movement (UCM, Unintended Car Movement) in fulfillment of Appendix 3 of regulation EN 81-1:2001+A3 (point 9.131).

Electronic module **UCM300**



NGV A3 Valve

# SAFETY MODULES FOR A3 SYSTEM

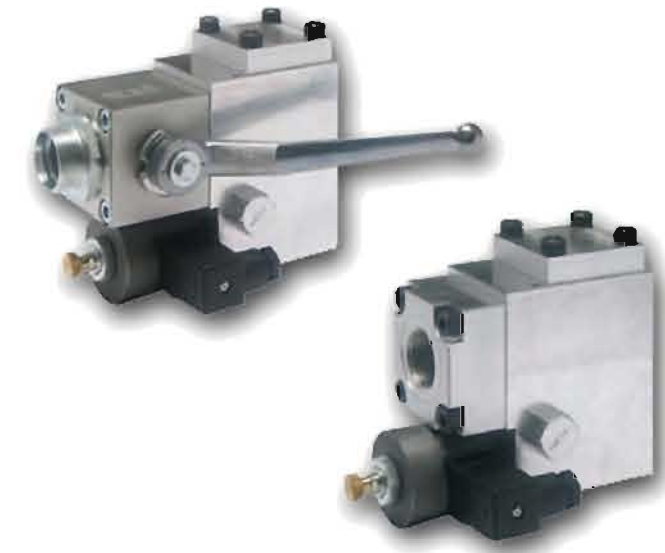


Certified by TÜV Rheinland according to EN 81-1/2:1998+A3:2009



Electronic module **UCM400**

**UCM 400** safety module for the control of Hydraulic plants with double mechanical valve in descent for systems of protection against unintended car movement ( UCM, Unintended Car Movement ) in fulfillment of Appendix 3 of regulation EN 81-1:2001+A3 (point 9.131).



Central hydraulic double mechanical valve



Electronic module **UCM500**

**UCM 500** safety module for the control of Hydraulic plants with double valve in descent BUCHER HYDRAULICS®. (valve DSV-A3 & regulating valve C-LRV with electronic card C-DELCON) for systems of protection against unintended car movement (UCM, Unintended Car Movement ) in fulfillment of Appendix 3 of regulation EN 81-1:2001+A3 (point 9.131).



NGV A3 Valve